

Development Site 25

Property: Brewster Creek Business Park

Location: North of Stearns Rd and west of Route 59

PIN(s):

Zoning: I-2 EDA

Comprehensive Plan: Mixed Use Business Park

Acreage: 670

Outlots:

County: Dupage\Cook

Sewer:

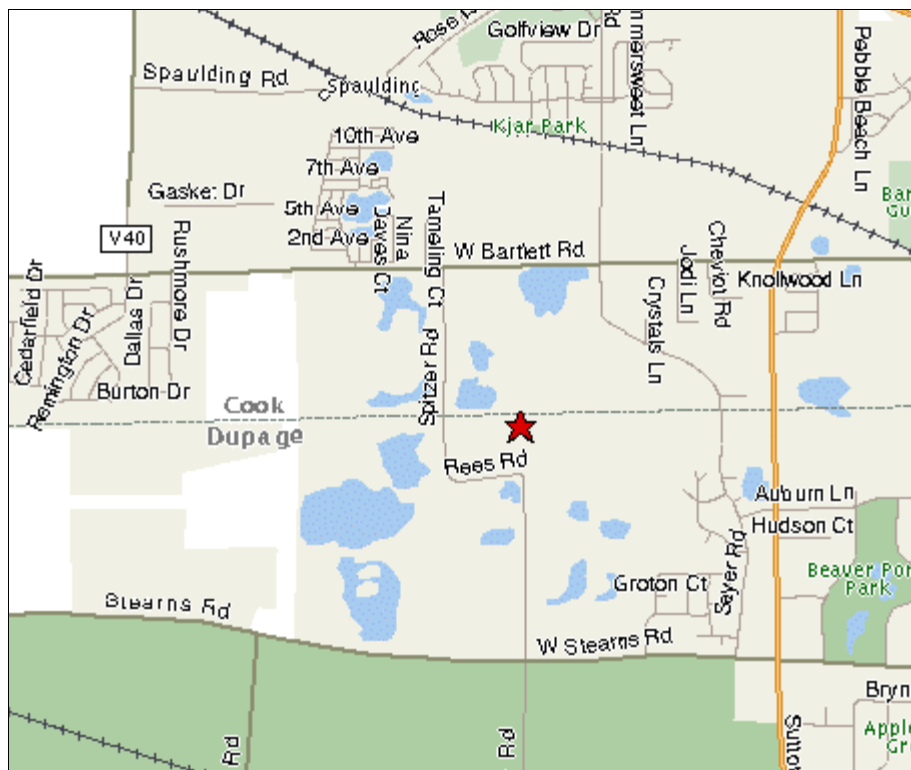
Water:

Contact: Brian Carroll (Grubb & Ellis)

(847) 655-8435

Owner(s): Elmhurst Chicago Stone

2-50 acre lots available



Development Site 25



Brewster Creek Business Park Bartlett, DuPage County, Illinois

☐ PHASE I WEST
145 ACRES
DuPage County

Number	Net Acres
1	17.47
2	16.26
3	Pond
4	47.45
5	Pond
6	4.06
7	5.59
8	8.08
9	8.67
10	6.67
11	3.93
12	2.23
13	1.81
14	1.75
15	1.97
16	1.56
17	1.50
18	1.49
19	2.00
20	2.88
21	2.20
22	1.96

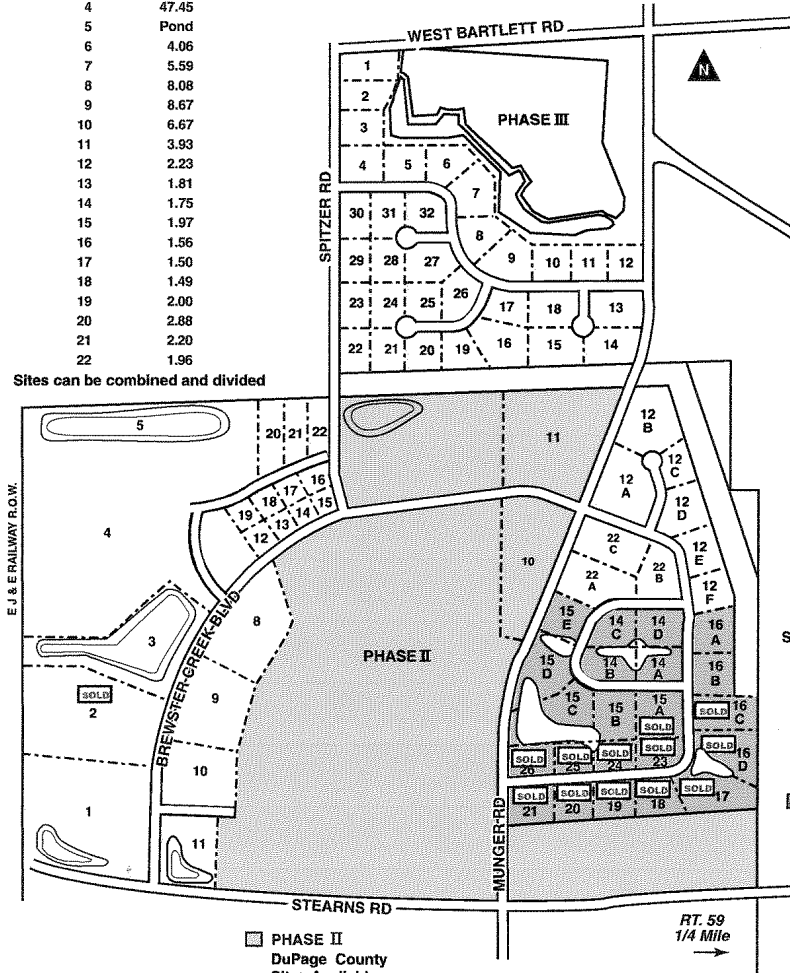
Sites can be combined and divided

☐ PHASE I EAST
105 ACRES
DuPage County

Number	Net Acres
12A	4.44
12B	5.23
12C	2.39
12D	3.21
12E	2.56
12F	2.73
22A	4.66
22B	3.27
22C	4.14

Sites can be combined and divide

■ OWNED BY
TRIUMPH DEVELOPMENT COI
Lots of 2-5 Acres For
Build-to-Suit



☐ PHASE II
DuPage County
Sites Available
Up To 100 Acres Plus
By 2006, or On Demand

brian Carroll 847.655.8435 brian.carroll@grubb-ellis.com

Grubb-Ellic

